



The Clear Choice in Lumbar Puncture

For decades clinicians performing lumbar punctures had to battle the issues of post lumbar puncture headache (PLPH). With the introduction of the atraumatic Sprotte needle the PLPH rates have been significantly reduced to allow for safer punctures and happier patients.

→ 40 years of evidence from high-quality research confirm: It's time to change the needle.^{1,2,3}

Is your traditional needle for lumbar puncture giving YOU headaches?

- PLPH**
- NEEDLE BLOCKAGE**
- UNSECURE PLACEMENT**
- SIDE EFFECTS**
- FAILURE OF CSF FLOW**
- LONG RECOVERY TIME**
- HIGH COSTS**



SPROTTE LUMBAR ADVANTAGES

- ▶ Increases application safety
- ▶ Minimises chance of PLPH^{1,2,4,5,6,7,8}
- ▶ Allows for quicker and optimised CSF flashback⁹
- ▶ Allows rapid detection of even the smallest quantities of CSF
- ▶ Minimises chance of tissue coring
- ▶ Increases efficiency, reduces process and treatment costs¹⁰

SPROTTE® Lumbar

Sprotte needle

Size	Introducer with wings	Item no. Standard	NRFit® Item no. Magnifying hub	PU
22G x 90 mm (3 1/2")		001151-30C	001163-30C	25
22G x 90 mm (3 1/2")	30 mm (1 1/5")	321151-30C	321163-30C	25
22G x 103 mm (4")	40 mm (1 3/5")	341151-30C	341163-30C	25
22G x 120 mm (4 3/4")		031151-30C	031163-30C	10
22G x 150 mm (6")	40 mm (1 3/5")	361151-30C		10
21G x 90 mm (3 1/2")		001151-31A	001163-31A	25
21G x 90 mm (3 1/2")	30 mm (1 1/5")	321151-31A	321163-31A	25
21G x 103 mm (4")	40 mm (1 3/5")	341151-31A	341163-31A	25
21G x 120 mm (4 3/4")	40 mm (1 3/5")	331151-31A	331163-31A	10
20G x 90 mm (3 1/2")		0001151-31	0001163-31	25
20G x 90 mm (3 1/2")	30 mm (1 1/5")	331151-31B	331163-31B	25
20G x 120 mm (4 3/4")	40 mm (1 3/5")	321151-31B	321163-31B	10
20G x 150 mm (6")		0041151-31		10
20G x 150 mm (6")	40 mm (1 3/5")	361151-31B		10

Sprotte introducer

without wings

Size	Sprotte Size	Item no.	NRFit Item no.	PU
1.20 x 30 mm (1 1/5")	20G	061151-30L	061163-30L	25
1.00 x 30 mm (1 1/5")	22G	001151-30L	001163-30L	25

Manometer

Manometer

Size	Item no.	NRFit Item no.	PU
3–34 cm H2O	001151-38G	001163-38F	1
Extension 20 cm H2O	001152-38G		1

PAJUNK® GmbH Medizintechnologie
Global Headquarters
Karl-Hall-Strasse 1
78187 Geisingen, Germany
Tel.: +49 7704 9291-0
Fax: +49 7704 9291-600
info@pajunk.com
pajunk.com

PAJUNK® Medical Produkte GmbH
Central Europe
Karl-Hall-Strasse 1
78187 Geisingen, Germany
Tel.: +49 7704 8008-0
Fax: +49 7704 8008-150
info@pajunk-medipro.com
pajunk.com

PAJUNK® Medical System L.P.
United States of America
6611 Bay Circle, Suite 140
Norcross, GA 30071, USA
Tel.: +1 770.493.6832
Fax: +1 678.514.3388
info@pajunk-usa.com
pajunkusa.com

PAJUNK® UK Medical Products Ltd
United Kingdom
Unit C1 The Waterfront
Goldcrest Way, Newburn Riverside
Newcastle upon Tyne, NE15 8 NY, UK
Tel.: +44 191 264 7333
info@pajunk.co.uk
pajunk.co.uk

XS200966 03/21

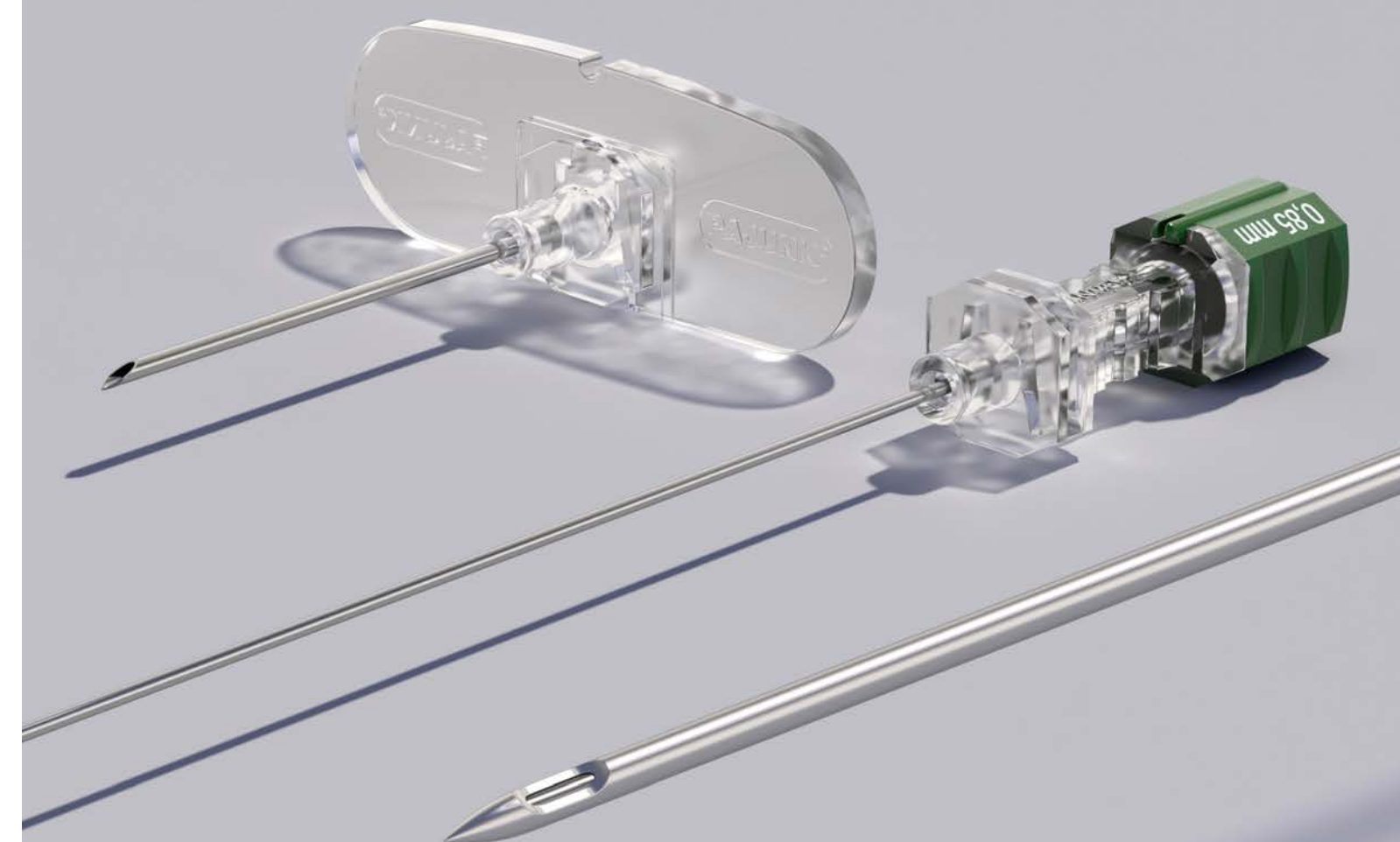
CE 0124

PAJUNK®



SPROTTE® Lumbar

Needles for Atraumatic Lumbar Puncture



MADE IN GERMANY

The Pioneer of Atraumatic Lumbar Puncture

Together with Pajunk, Prof. Sprotte developed the Sprotte, the first atraumatic needle for lumbar puncture. The secret of its success can be found in its unique tip geometry and basic architecture. This design, developed especially for the requirements of dural puncture, allows for an atraumatic puncture of the ligamentary structures and optimises CSF flow while reducing the incidence of post-lumbar puncture headaches (PLPH).

→ Sprotte decreases complications of lumbar puncture and increases the safety of application, and the efficiency of diagnostics.

CLINICAL COMPARISON OF SPROTTE VS QUINCKE⁶

Sprotte: Evidence class 1, recommendation level A^{5,6,7,8}

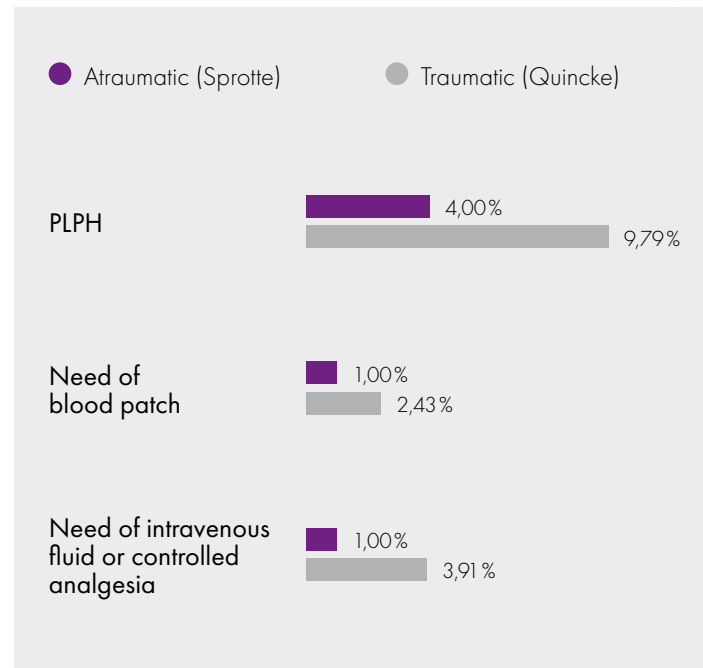
Sprotte – atraumatic needle

Leading technology for decreasing the incidence of post-lumbar puncture headaches.⁵



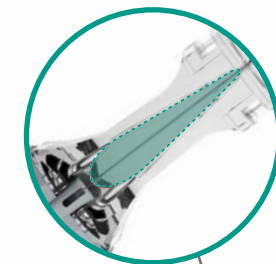
Quincke – cutting needle

One risk factor for post-lumbar puncture headaches is the use of a Quincke needle.⁶



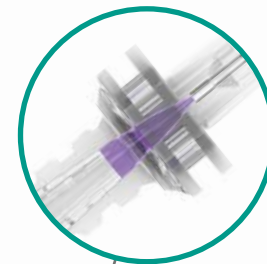
Magnifying Hub (Only NRFit®)

Clear, magnifying needle hub allows for easy visualisation of blood or CSF.
→ Easier detection of CSF flashback



Needle Hub with Reduced Inner Space

→ Designed for rapid detection of even the smallest quantities of CSF



Colour-Coded Needle Hub with Size Indication

→ Easy identification of needle size



Portfolio Excellence

→ Wide needle range with different diameters and lengths
→ Special designs for pediatrics and obese patients

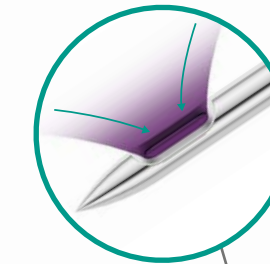
Highest Processing Quality

- High quality stainless steel needle for increased stability
- Smoothly polished and burr-free surface and inner lumen designed for optimised gliding properties and CSF backflow
- Consistent feel and reliable performance



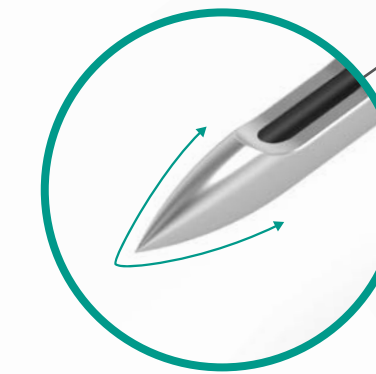
Optimal Lateral Eye Size and Placement

- Unobstructed backflow, even if the eye is partially blocked by the arachnoid membrane
- Allows for quicker CSF flashback⁹



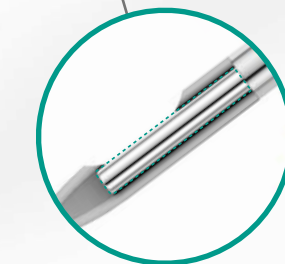
Lateral Eye

- Burr-free, rounded atraumatic edges
- Optimised gliding properties
- Minimum chance of tissue coring and carry-over into the subarachnoid space¹⁰



Precision-Ground Metal Stylet

- Lateral eye closes precisely to minimise chance of tissue coring¹⁰
- Polished, rounded tip prevents abrasion on the inner needle tube



Atraumatic Tip Design

- The ogive shaped tip significantly reduces the risk of PLPH and the rounded edges of the lateral eye minimise trauma to the dura mater.
- Minimises chance of PLPH^{1,2,4,5,6,7,8}
- Consistent tactile feedback



Also available in NRFit®

1. Davis, A.; Dobson, R.; Kaninia, S.; Giovannoni, G.; Schmierer, K. (2016): Atraumatic needles for lumbar puncture: why haven't neurologists changed? In Practical neurology 16 (11), pp. 1822. DOI: 10.1136/practneurol-2016-001055.
2. Engedal, Thorbjørn S.; Ørding, Helle; Vilholm, Ole Jakob (2015): Changing the needle for lumbar puncture: results from a prospective study. In Clinical neurology and neurosurgery 130, pp. 7479. DOI: 10.1016/j.clineneuro.2014.12.020.
3. Tang, C. E.; Yuen, T. S.; Lansberg, M. G. (2012): Cost comparison between the atraumatic and cutting lumbar puncture needles. In Neurology 78, pp. 10913.
4. Arevalo-Rodriguez, Ingrid; Muñoz, Luis; Godoy-Casasbuenas, Natalia; Ciapponi, Agustin; Arevalo, Jimmy J.; Boogaard, Sabine; Roqué I Figuls, Marta (2017): Needle gauge and tip designs for preventing post-dural puncture headache (PDPH). In The Cochrane database of systematic reviews 4, CD010807. DOI: 10.1002/14651838.cd010807.pub2.
5. McLaughlin, Colleen A.; Hockenberry, Marilyn J.; Kurtzberg, Joanne; Huedel, Rene; Martin, Paul L.; Docherty, Sharon L. (2014): Standardization of health care provider competencies for intrathecal access procedures. In Journal of pediatric oncology nursing: official journal of the Association of Pediatric Oncology Nurses 31 (6), pp. 304316. DOI: 10.1177/1043454214543019.
6. Nath, Siddharth; Kozior, Alex; Bodhiwala, Jatan H.; Alhazzani, Waleed; Joeschke, Roman; Sharma, Sunjay et al. (2018): Atraumatic versus conventional lumbar puncture needles: a systematic review and meta-analysis. In The lancet 391 (10260), pp. 11971204. DOI: 10.1016/S0140-6736(17)32451-0.

7. Rochweg, Bram; Almenawer, Saleh A.; Siemieniuk, Reed A. C.; Vandvik, Per Olav; Agoritos, Thomas; Lytvyn, Lyubov et al. (2018): Atraumatic (penic-point) versus conventional needles for lumbar puncture: a clinical practice guideline. In BMJ, 31920. DOI: 10.1136/bmj.k1920.
8. Zhang, Yi C.; Chandler, Alexander J.; Kegettu, Nolan J. (2014): Technical compliance to standard guidelines for lumbar puncture and myelography: survey of academic neuro-radiology attendings and fellows. In Academic radiology 21 (5), pp. 612616. DOI: 10.1016/j.acra.2014.01.021.
9. Bellamkonda, Venkatesh R.; Wright, Thomas C.; Lohse, Christine M.; Keaveney, Virginia R.; Funk, Eric C.; Olson, Michael D.; Loock, Torrey A. (2017): Effect of spinal needle characteristics on measurement of spinal canal opening pressure. In The American journal of emergency medicine 33 (5), pp. 752772. DOI: 10.1016/j.ajem.2017.01.047.
10. Puolakka, R.; Andersson, L. C.; Rosenberg, H. (2000): Microscopic Analysis of Three Different Spinal Needle Tips After Experimental Subarachnoid Puncture. In Regional Anesthesia and Pain Medicine 25 (2), pp. 163169.
11. Lavi, R.; Rowe J.M., Avivi I. Lumbar Puncture: It is Time to Change the Needle. Eur Neurol, 2010; 64:10813

STUDIES CONCLUSIONS

- ▶ Atraumatic lumbar puncture needles are safe to use^{1,2,4,5,6,7,8}
- ▶ Require a minimal learning curve⁵
- ▶ Provide reliable results⁶
- ▶ Minimise side effects, complication, and recovery time²
- ▶ High savings potential by minimising process and treatment costs^{3,8}
- ▶ Increase efficiency³

It's time to change the needle.^{1,2,11}